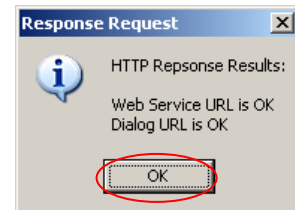
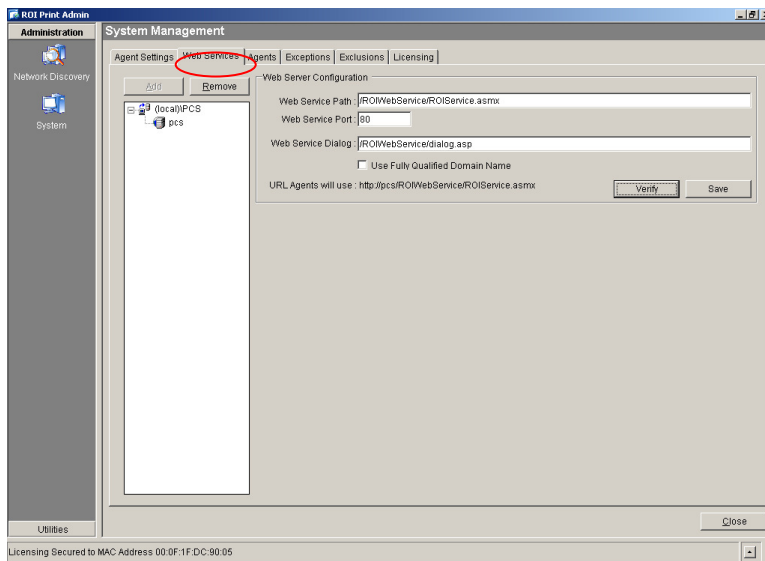




ROI Agent Packager

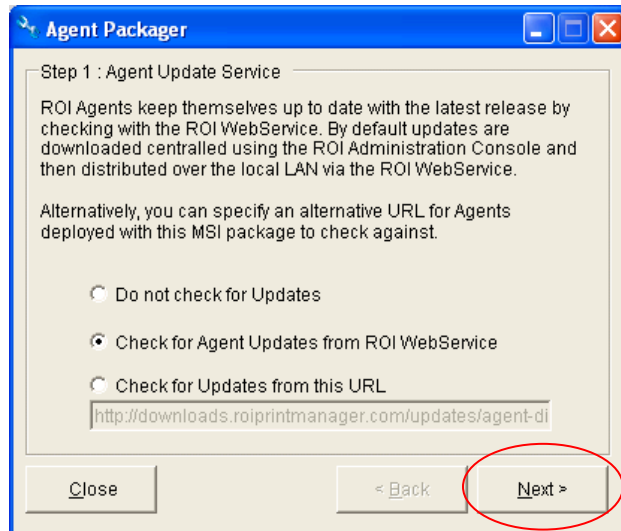
ROI Print Manager offers various methods of deployment. Apart from ROI deployment tool that is built into the software, ROI includes an Agent Packager program that creates a .msi package that can be turned over to the sites IT department for deployment using SMS, Zenworks, Login Script or other 3rd party deployment tools.

Before a .msi package can be created using the Agent Packager, the ROI Admin Console software needs to be configured, licensed and the collection point machine designated. You can either do a network discovery for all the computers you want to include, or you can simply do a discovery for the ROI Administration machine only. In this example, we have simply discovered the ROI Admin Console. (See ROI Configuration Manual).

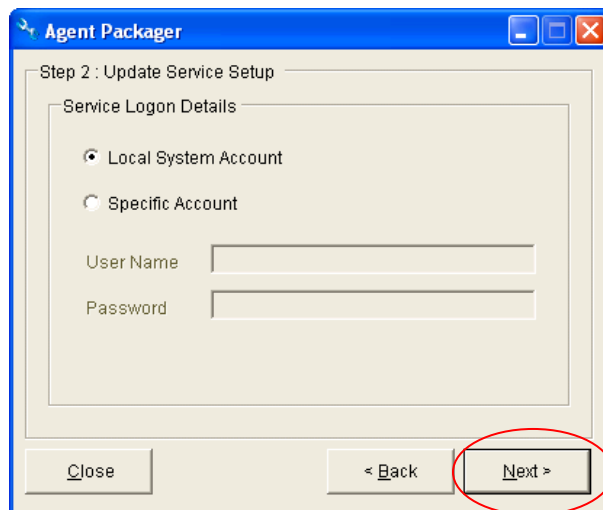


Once you have saved in the collection point PC and verified its web service, you can begin to create the .msi package. Go to **Start/All Programs/PCS/ROI Print Manager/ROI Agent Packager**.

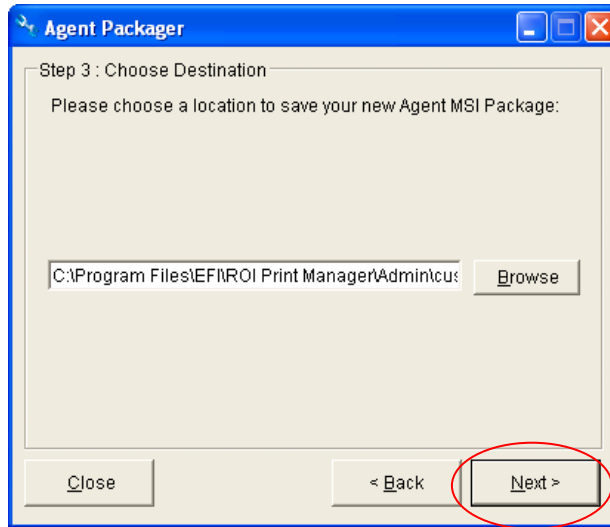
This opens the Agent Packager.



Here you have 3 options that will determine how agent updates will be performed. If you do not wish to have agents updated automatically select the first option. If you want to first pull down an agent update to the ROI Admin Console and then deliver it automatically, select option 2. If you want agent updates to be pulled down directly from our URL, select option 3. Hit Next.

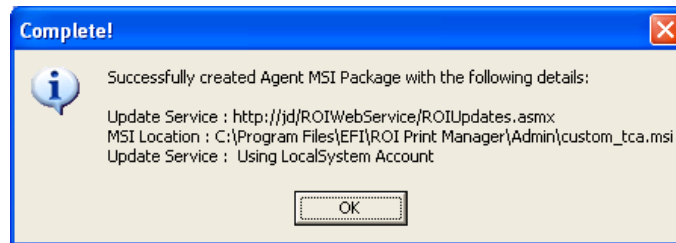


You next have the option to install under the local system account or a specific account that is password protected. Most installations will just use the local system account.



You will now be prompted for a directory to put the .msi package. It is often times easiest to place it on the desktop.

Once you have chosen the location for the finished .msi file, hit the finish button. You are then presented with the screen below. This shows you the webservice path that the .msi packages will report back on. Hit the OK button. You have now completed the process of creating the .msi package. You can close the Agent Packager application.



You now have a .msi package that can be handed to their IT department for distribution. They can use a quiet switch with no user intervention (/qn) so that end users will not have to do anything other than log off/on to get communications started after the agent is installed. They can also uninstall the agent using their deployment software by using a /x switch (remove) instead of a /i switch (install)

IMPORTANT: Remember to always deploy to a few test machines first and verify communications under the Agents tab in the ROI Admin console *before* deploying to the entire network. Agents that are communicating correctly will have numbers on both sides of the download/upload column. A few test prints should be sent to verify that the numbers increment up as users print.